



Cumberland Trace
By Moss Creek

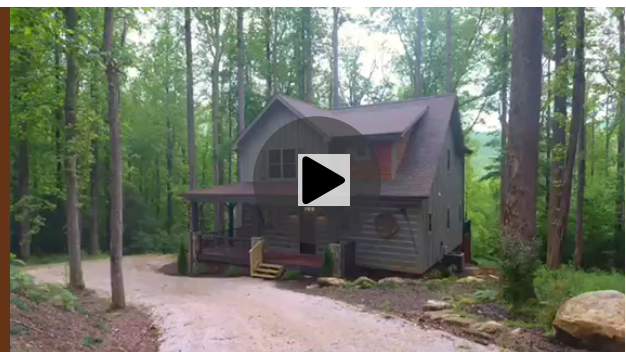
**Meet the Cumberland
Trace**

Designed for permanent or second home living, this 1630 sq. ft. home with touches of stonework, horizontal & vertical wood siding, barn wood shutters, cedar shakes and metal roof accents is under construction and ready for Interior Selections to be made.

This home by Moss Creek – renowned for luxury rustic home & cabin design – reflects the natural beauty of the setting. The open floor plan features window placement to capture the beauty of the NC Mountains and a kitchen that opens to a comfortable living area that flows to outdoor relaxing or entertaining experiences.

[View Available Properties](#)

The Cumberland Trace offers Mountain living on two levels. The main level features an open plan with a vaulted ceiling and fireplace in the great room, which flows into



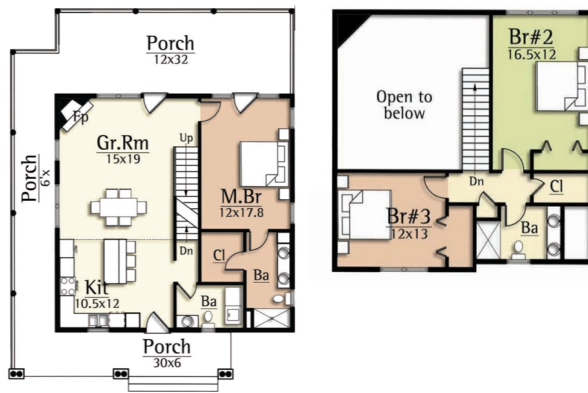
Virtual Tour

the kitchen. A spacious rear deck extends the entertaining space outdoors. This three-bedroom Cottage offers a luxurious master suite on the main level and two bedrooms on the upper level with their own full bath. Prices are subject to change.

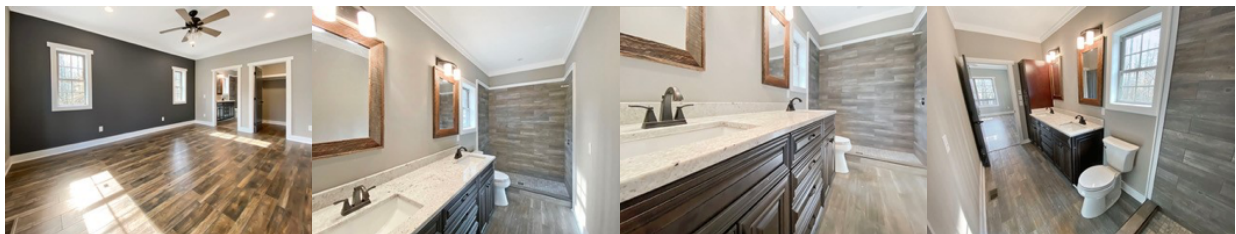
****Pricing includes nicely appointed base finishes. Premium and view homesites will have an upcharge. Exterior materials may not look exactly like the picture. Materials, floor plan, and finishes may change at the discretion of the builder/developer due to supply shortages, materials***

cost, etc. Picture may not depict the base model.

Request Information



Request Information





1 2 Next

Request Information

Convenient Seclusion

**Linville Falls
Sales Office:**

260 Hunnicut
Mountain Road,
Marion, NC 28752

828-756-4008

**Hours: By
Appointment Only**

**Request an
Appointment:**



First Name*

Last Name*

Email*

Phone



Are you
working with
an agent?*

Name of
Agent

Linville Falls
MOUNTAIN CLUB

Enter the
Captcha



Reload

SUBMIT

RESET